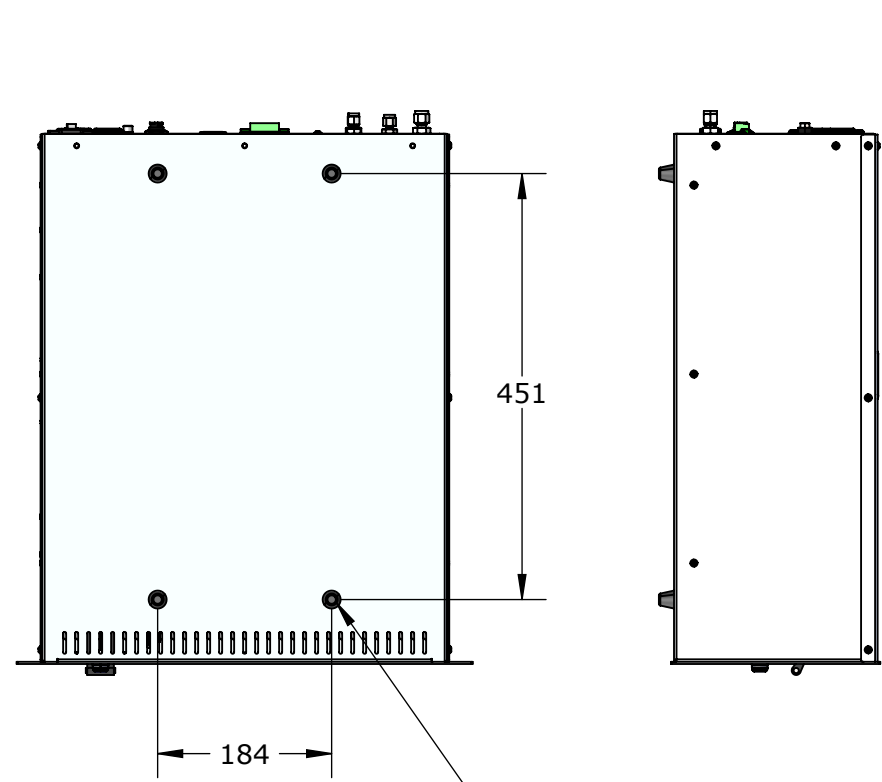


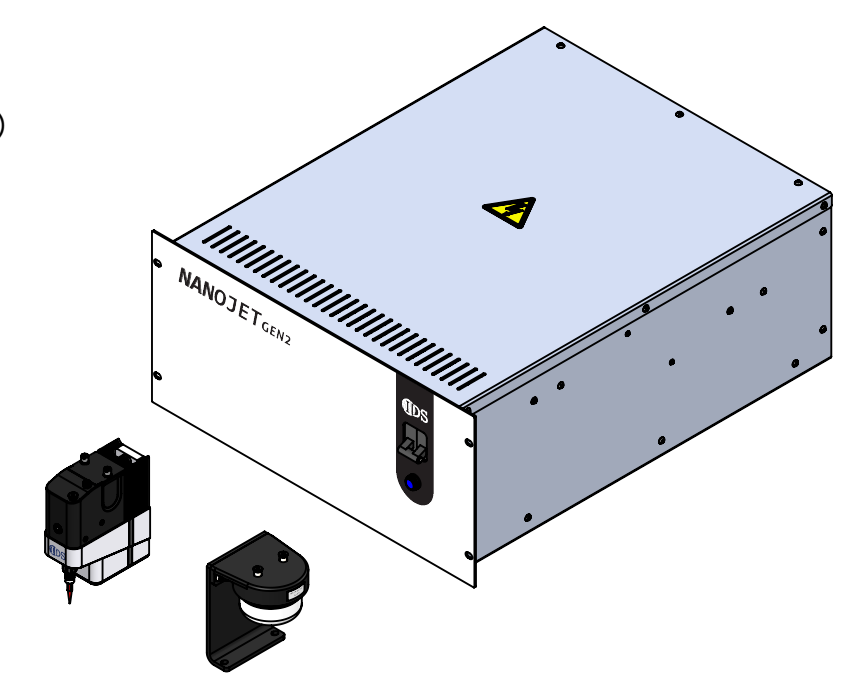
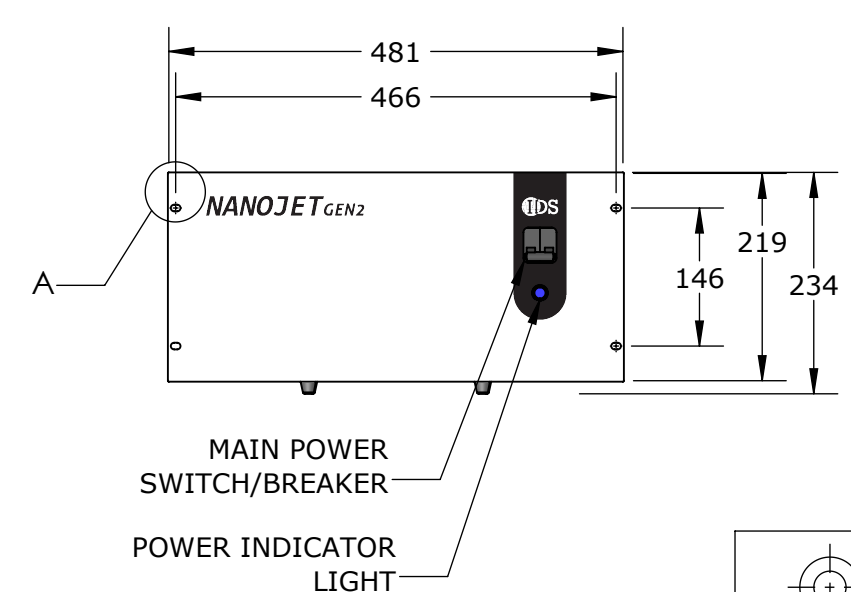
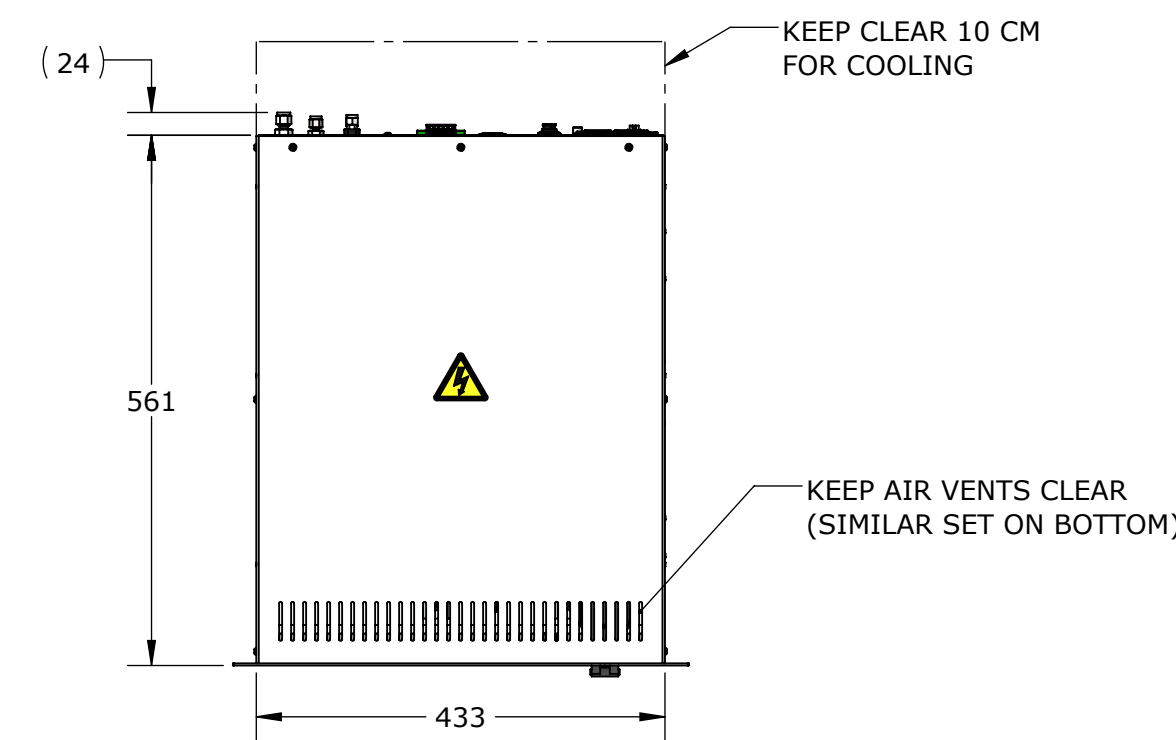
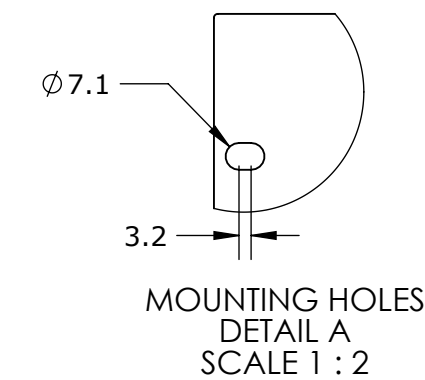
NOTES

- 1. SYSTEM WEIGHT: 13 KG PCM, 1 KG PRINTHEAD (DRY)
- 2. POWER REQUIREMENTS: 120/240 VAC 50/60 Hz, 1A/0.5A (MAX 8A IF PLATEN HEATER USED)
- 3. COOLING WATER REQUIREMENTS: 2 LPM, 35°C RECOMMENDED MAXIMUM
- 4. GAS SUPPLY REQUIREMENTS: CLEAN DRY AIR OR LABORATORY GRADE NITROGEN, 0.7 BAR 300 SCCM
- 5. SEE USER MANUAL FOR REPLACING PLATEN HEATER FUSES
- 6. USER SERVICABLE COMPONENTS INSIDE. SEE USER MANUAL. DISCONNECT POWER BEFORE OPENING PCM.

REVISIONS				
ZONE	REV.	DESCRIPTION	DATE	EC
	C	SHOW PCM FEET, SHOW TUBING CONNECTIONS, UPDATE WEIGHT	01/20/2026	01737 1970 02124



RUBBER FEET MAY BE UNSCREWED TO ACCESS M5 MOUNTING HOLES



3RD ANGLE PROJECTION

PROPRIETARY AND CONFIDENTIAL
THE INFORMATION CONTAINED IN THIS DRAWING IS THE SOLE PROPERTY OF IDS (INTEGRATED DEPOSITION SOLUTIONS, INC.). ANY REPRODUCTION IN PART OR AS A WHOLE WITHOUT THE WRITTEN PERMISSION OF IDS IS PROHIBITED.

UNLESS OTHERWISE SPECIFIED:
DIMENSIONS ARE IN MILLIMETERS

TOLERANCES	
NO DECIMALS	±0.5 MM
ONE PLACE DECIMAL	±0.2 MM
TWO PLACE DECIMAL	±0.1 MM
ANGULAR	±0.5°

DIMENSIONS IN PARENTHESIS FOR REFERENCE ONLY
INTERPRET GEOMETRIC TOLERANCING PER: ANSI

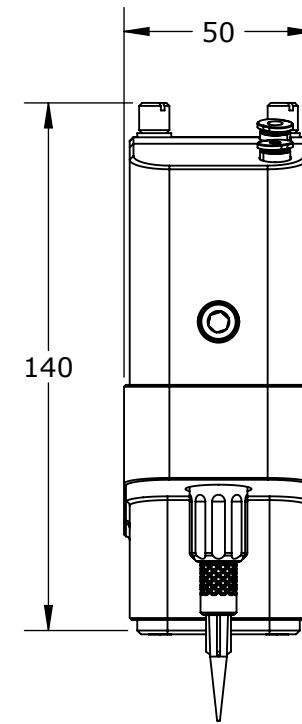
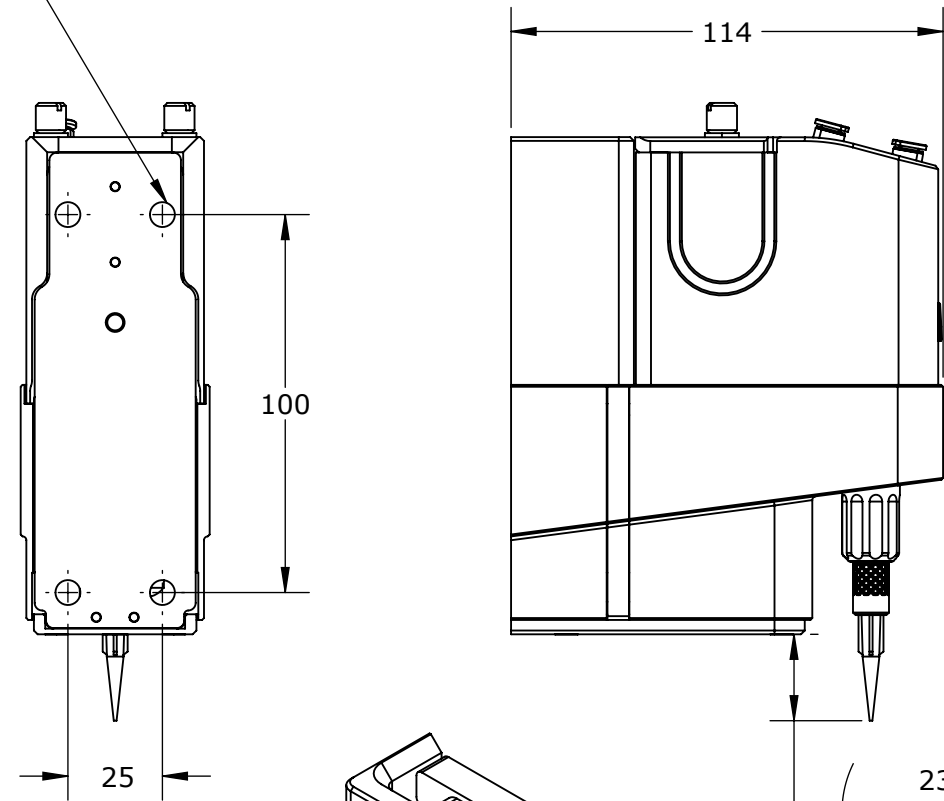
MATERIAL	N/A
FINISH	N/A
DO NOT SCALE DRAWING	

IDS INTEGRATED DEPOSITION SOLUTIONS, Inc.
609 Osuna Rd, NE, Albuquerque, NM
www.idsnm.com

TITLE:
**NANOJET GEN2 SUBSYSTEM,
FACILITY DRAWING**

DWG. NO.	REV C
SCALE: 1:8	SIZE B
SHEET 1 OF 4	

(4) MOUNTING HOLES
FOR M6 SOCKET HEAD SCREWS
ON 100 X 25 MM PATTERN
(HOLES ARE NOT THREADED)

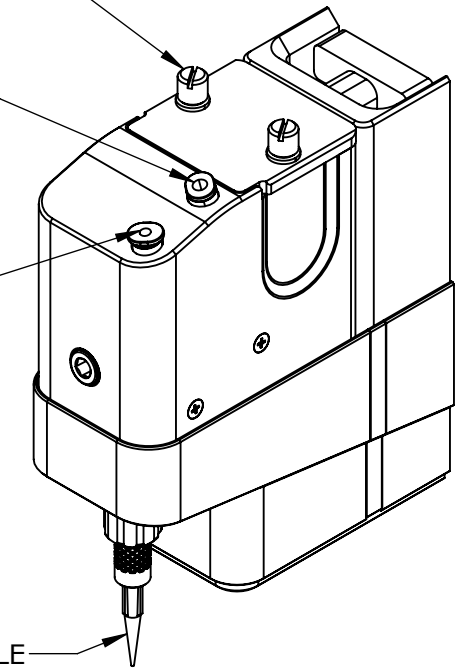


CAPTIVE SCREWS FOR LID REMOVAL
DO NOT OVERTIGHTEN

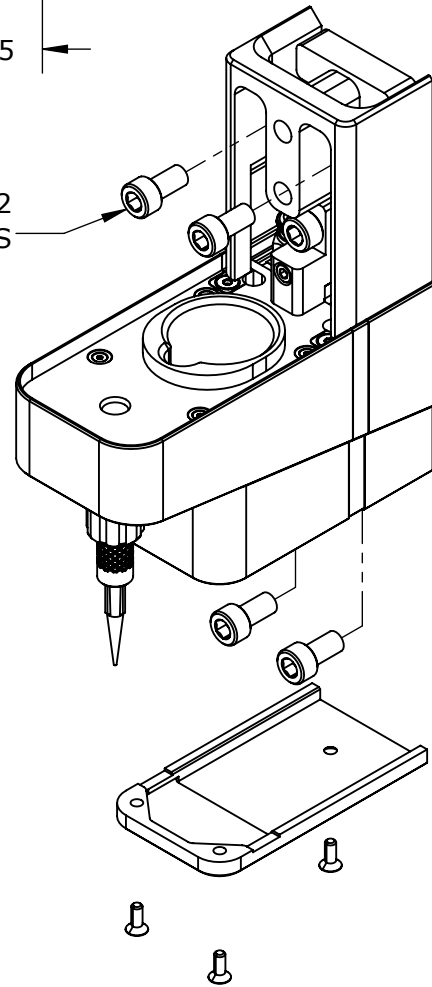
AEROSOL GAS INLET
4 MM O.D. PLASTIC TUBING
PUSH CONNECT FITTING

SHEATH GAS INLET
3 MM O.D. PLASTIC TUBING
PUSH CONNECT FITTING

PRINT NOZZLE



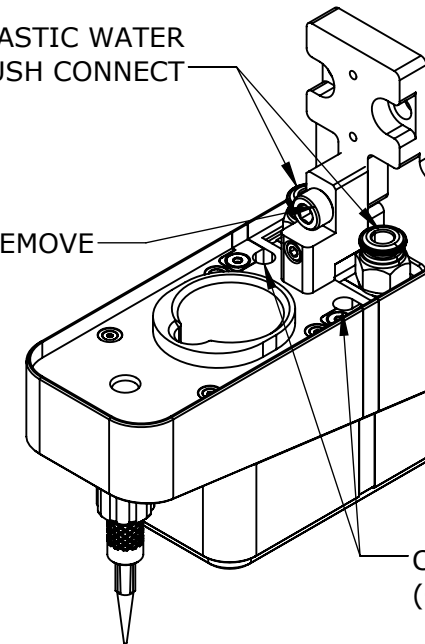
4X M6X12
SOCKET HEAD SCREWS



DISASSEMBLY FOR MOUNTING

(2) 6 MM O.D. PLASTIC WATER
COOLING LINES, PUSH CONNECT

DO NOT REMOVE



CABLE EXIT
(CABLES NOT SHOWN)

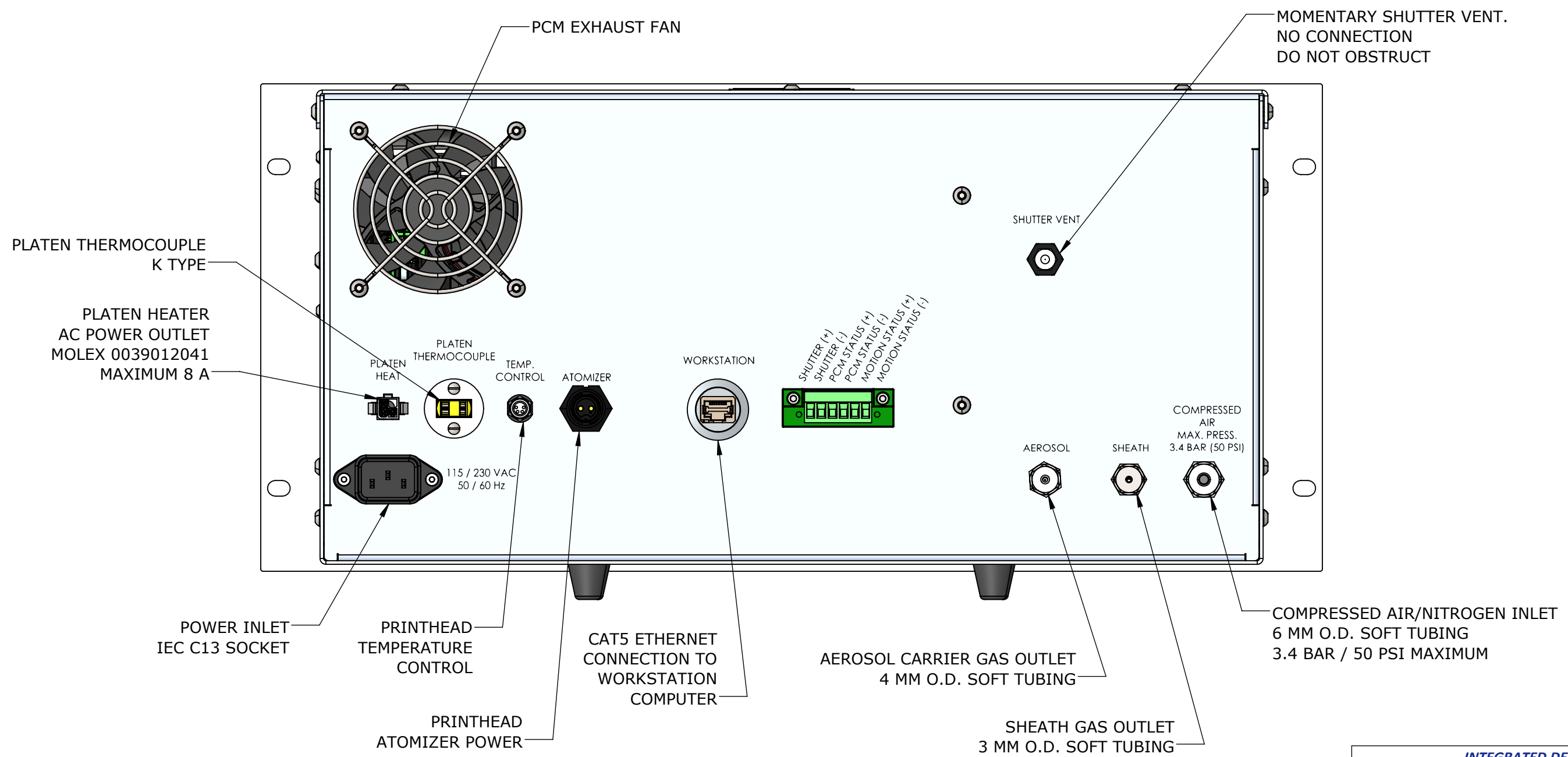
CARTRIDGE AND BACK COVER HIDDEN THIS VIEW

IDS INTEGRATED DEPOSITION SOLUTIONS, Inc.
609 Osuna Rd, NE, Albuquerque, NM
www.idsnm.com

TITLE:
**NANOJET GEN2 SUBSYSTEM,
FACILITY DRAWING**

DWG. NO. REV
C

SCALE: 1:2 SIZE B SHEET 2 OF 4

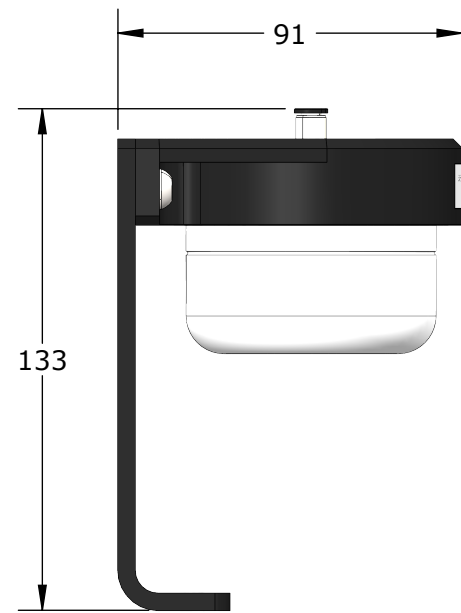


IDS INTEGRATED DEPOSITION SOLUTIONS, Inc.
609 Osuna Rd, NE, Albuquerque, NM
www.idsnm.com

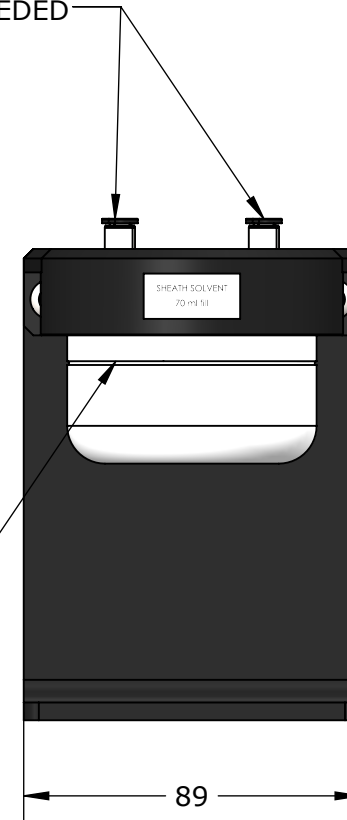
TITLE:
**NANOJET GEN2 SUBSYSTEM,
FACILITY DRAWING**

DWG. NO.	REV C
SCALE: 1:2	SIZE B
SHEET 3 OF 4	

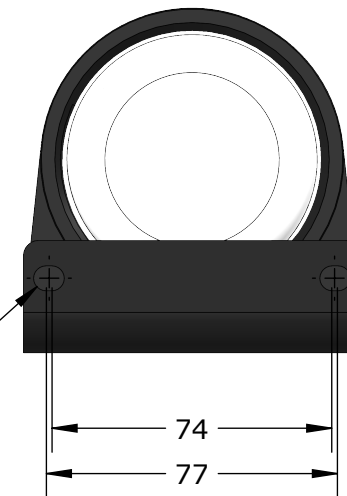
SSVS CONNECTIONS
 3 MM PUSH CONNECT FITTINGS
 INLET AND OUTLET CAN BE SWAPPED AS NEEDED



FILL LINE FOR
 70 ML NORMAL FILL



2X MOUNTING
 HOLES \varnothing 6.6



IDS INTEGRATED DEPOSITION SOLUTIONS, Inc.
 609 Osuna Rd, NE, Albuquerque, NM
 www.idsnm.com

TITLE:
**PCM, GEN2 SINGLE
 MATERIAL SUBSYSTEM**

DWG. NO. REV

C

SCALE: 1:2 SIZE B SHEET 4 OF 4